



Using regulators' logos on certificates

About this document

This document explains when awarding organisations should use the logos of CCEA Regulation, Ofqual and Qualifications Wales (the regulators) on certificates issued to Learners taking regulated qualifications.

Certificates for regulated qualifications

There are a number of different types of certificate that awarding organisations currently issue for regulated qualifications.

All three regulators **require** awarding organisations to issue qualification certificates (which formally confirm a Learner has achieved a qualification) to Learners who have successfully completed a regulated qualification¹.

Awarding organisations can also **choose** to issue:

- unit certificates – which show results for qualification units; and
- credit certificates – which show credits awarded for qualifications and/or units.

Using the regulators' logos

Each of the regulators sets separate rules which govern the use of its own logo on certificates. This means that:

- CCEA Regulation's rules govern the use of the CCEA Regulation logo (and do not require or prevent the use of the Ofqual or Qualifications Wales logos);
- Ofqual's rules govern the use of the Ofqual logo (and do not require or prevent the use of the CCEA Regulation or Qualifications Wales logos); and
- Qualifications Wales' rules govern the use of the Qualifications Wales logo (and do not require or prevent the use of the CCEA Regulation or Ofqual logos).

If a qualification is regulated by more than one of the regulators, there are some situations where awarding organisations can choose to include more than one

¹ Awarding organisations should note that Ofqual requires them to take all reasonable steps to issue qualification certificates to **all** Learners – both within and outside England



regulator's logo on a certificate, and some where awarding organisation **must** include more than one regulator's logo.

To understand which logo(s) it must (or can) include on any given certificate, an awarding organisation should consider **all** of the following questions:

- Should I use CCEA Regulation's logo on this certificate?
- Should I use Ofqual's logo on this certificate?
- Should I use Qualifications Wales' logo on this certificate?

Awarding organisations can use the flowcharts below to answer these questions for **any** qualification, unit or credit certificate they issue.

As illustrated in the following examples, the answers derived from the flowcharts determine which logo(s) an awarding organisation must, or can choose to, use.

Example 1

The results of working through the flowcharts are that the CCEA Regulation logo must appear, the Ofqual logo must appear, and the Qualifications Wales logo must not be used.

Here, the certificate must include **both** the CCEA Regulation and Ofqual logos.

No other combinations of the regulators' logos are permitted.

Example 2

The results of working through the flowcharts are that the CCEA Regulation logo must appear, the Ofqual logo must not appear, and the Qualifications Wales logo can (but does not have to appear).

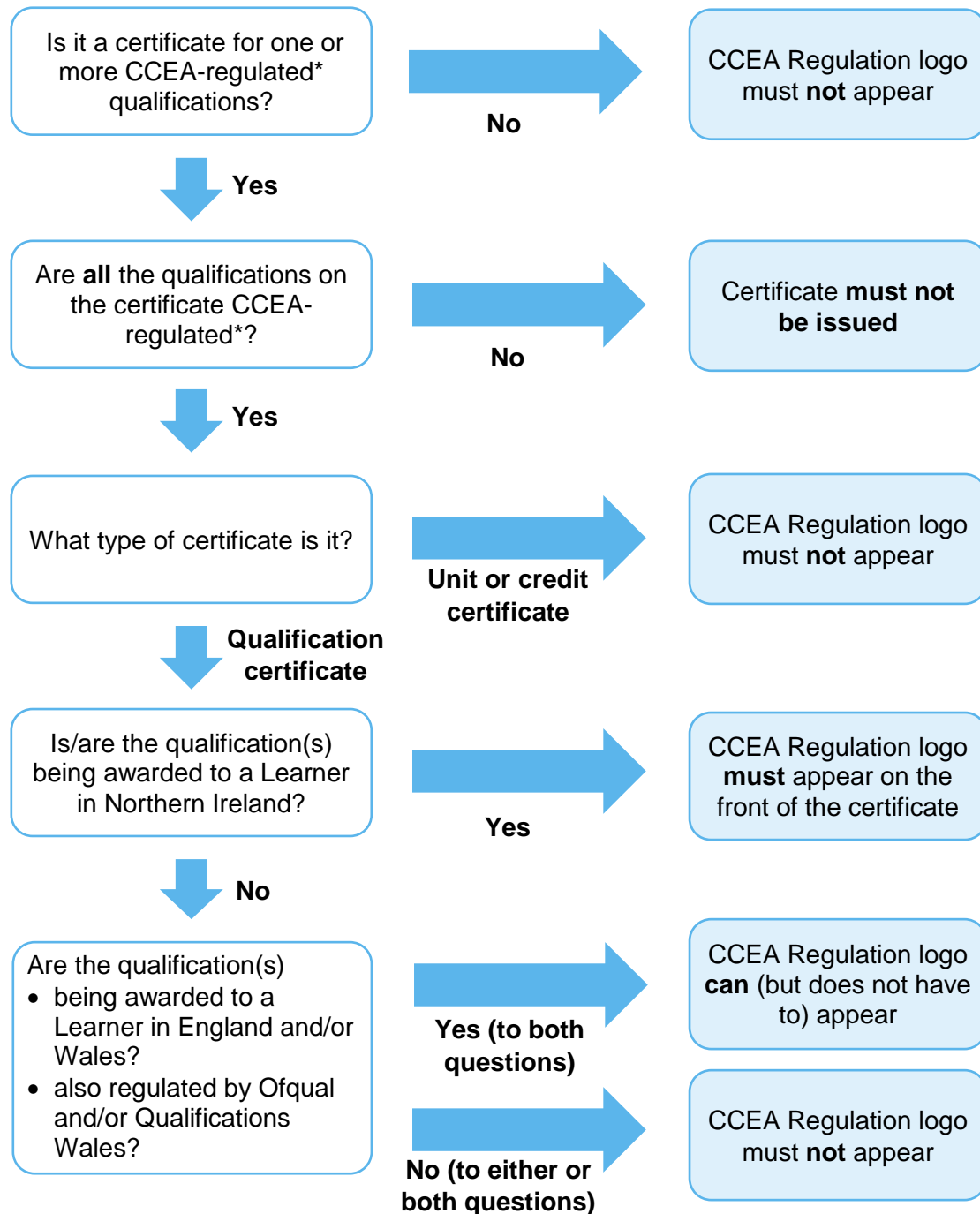
In this case, the awarding organisation must issue either a certificate with **only** the CCEA Regulation logo, or a certificate with **both** the CCEA Regulation and Qualifications Wales logos.

No other combinations of the regulators' logos are permitted.

Awarding organisations **must not** use the CCEA Regulation, Ofqual or Qualifications Wales logo for any other purpose without the express written permission of the relevant regulator.

Should I use CCEA Regulation's logo on this certificate?

Awarding organisations can use the following flowchart to determine whether the CCEA Regulation logo should appear on a certificate.

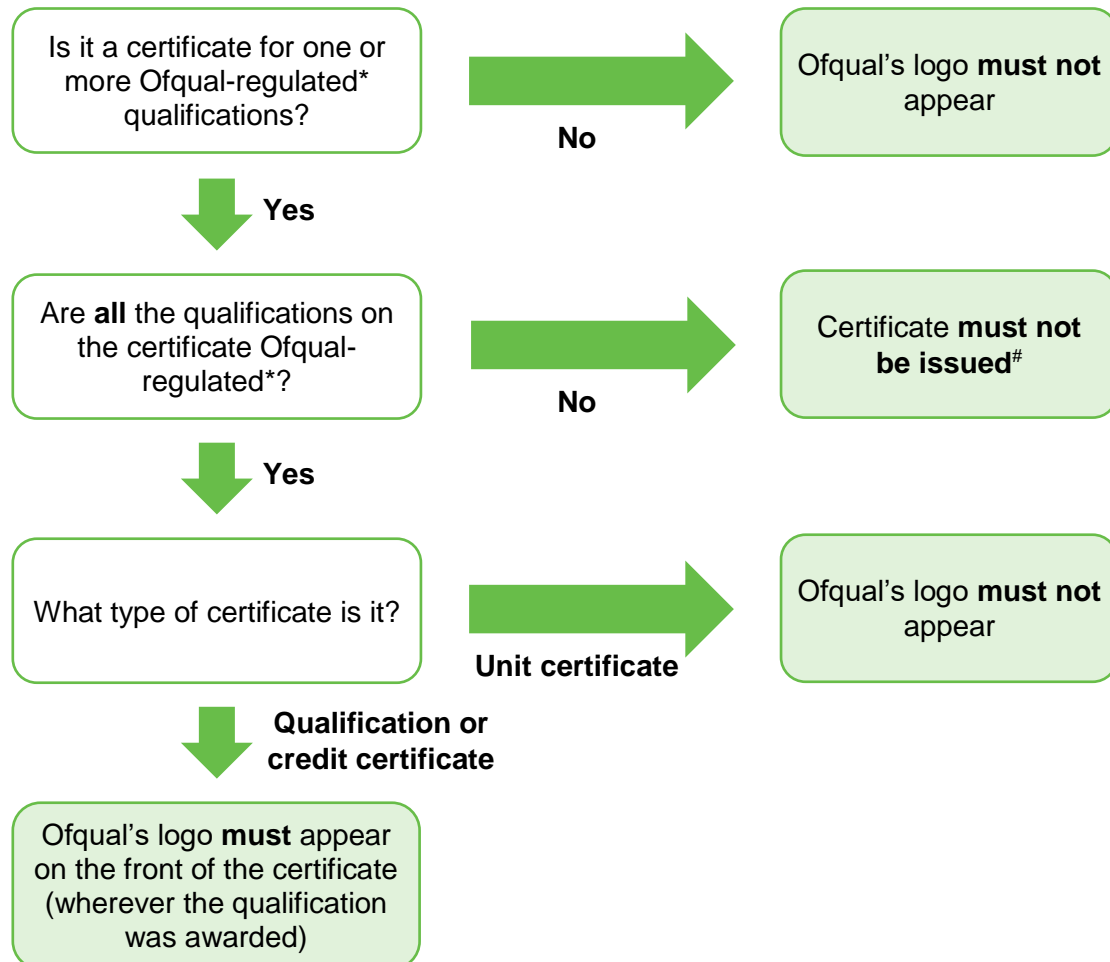


* A qualification is CCEA-regulated if it:

- is within an awarding organisation's scope of recognition; and
- has, or may reasonably be expected to have, one or more Learners who are, will be or may reasonably be expected to be, assessed wholly or mainly in Northern Ireland

Should I use Ofqual's logo on this certificate?

Awarding organisations can use the following flowchart to determine whether the appropriate Ofqual logo (available through the AO Portal) should appear on a certificate.



* A qualification is Ofqual-regulated if it:

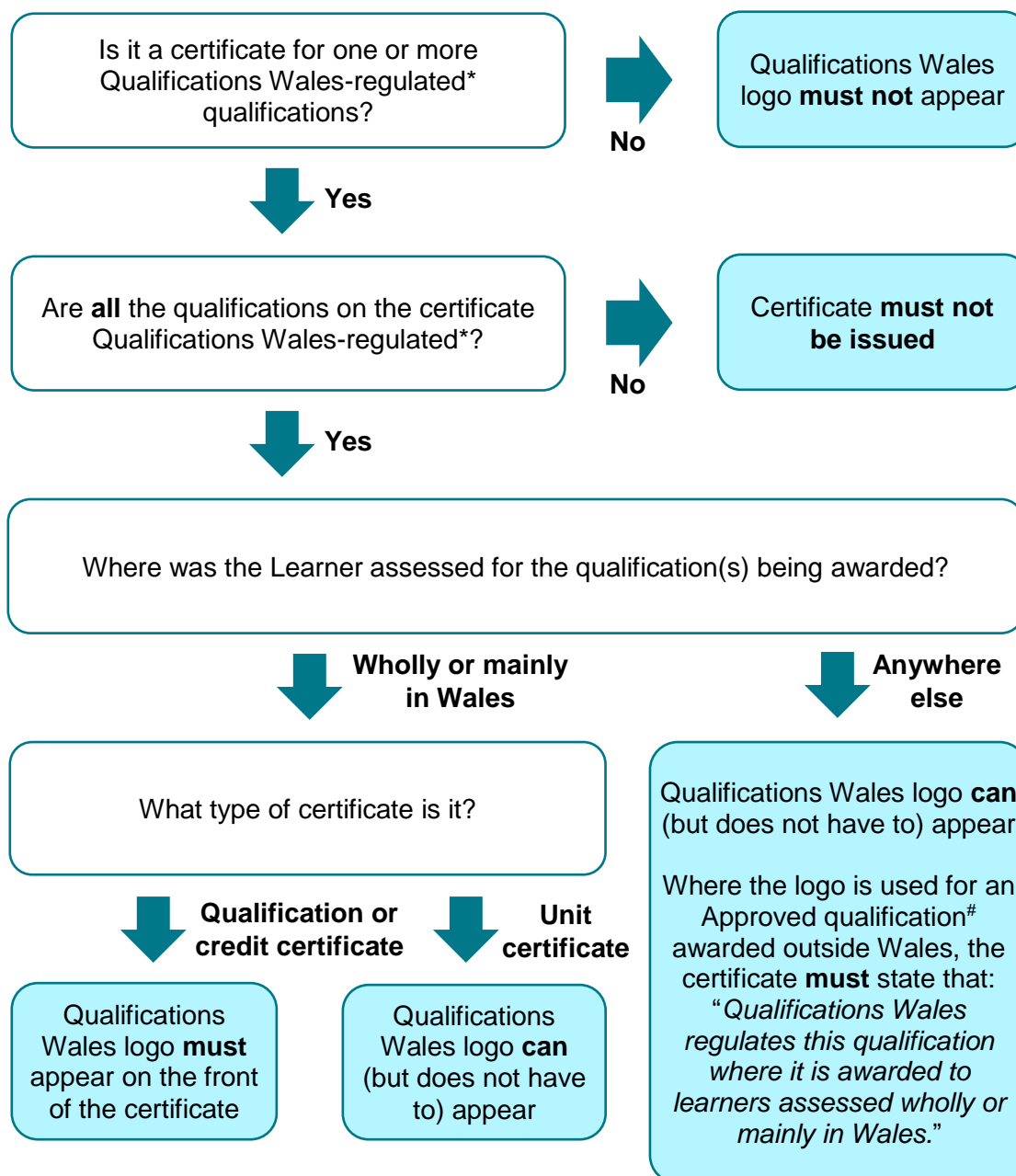
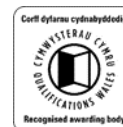
- is within an awarding organisation's scope of recognition; and
- has, or may reasonably be expected to have, one or more Learners who are, will be or may reasonably be expected to be, assessed wholly or mainly in England

Ofqual has agreed some limited exceptions to this rule during the introduction of reformed GCSEs, AS and A levels



Should I use Qualifications Wales' logo on this certificate?

Awarding organisations can use the following flowchart to determine whether the appropriate Qualifications Wales' logo (right) should appear on a certificate.



* Any qualification awarded to Learners assessed wholly or mainly in Wales, unless the awarding body has surrendered the qualification from its scope of recognition.

Regulated qualifications eligible for use on publicly funded programmes of learning that have been approved by Qualifications Wales against published approval criteria.