



Northern Ireland
Curriculum

Reading Scheme to Support the
Learning for Life and Work Thematic Units (SLD)
Jobs in the Local Community
Level 2

Writers' Group:

Graham Hawthorne, Marian Humphrey, Shirley Gwynne and Avril Napier, all from Roddensvale School, Larne

A CCEA Publication ©2010

www.nicurriculum.org.uk

Photographs

All photographs courtesy of Roddensvale School, Larne

Reading Scheme to Support the
Learning for Life and Work
Thematic Units (SLD)

Jobs in the Local Community

Level 2



This book describes some jobs in the local community.



This is a café. Jobs in a café might include serving food and washing dishes.



This is a garden centre. Jobs in a garden centre might include watering and potting plants.



This is a charity shop. Jobs in a charity shop might include hanging clothes and cleaning up.



This is a garage. Jobs in a garage might include washing cars and cleaning parts.



This is a hairdresser's. Jobs in a hairdresser's might include hanging up customers' coats and brushing the floor.



This is a corner shop. Jobs in a corner shop might include moving and opening boxes.



This is an office. Jobs in an office might include shredding paper and using the telephone.



This is a day care nursery. Jobs in a nursery might include making juice and playing with children.

Name the places



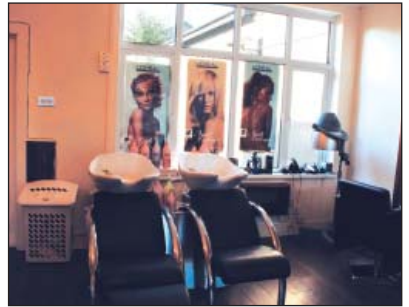
1.



2.



3.



4.



5.

A CCEA Publication © 2010



COUNCIL FOR THE CURRICULUM EXAMINATIONS AND ASSESSMENT 29 Clarendon Road, Clarendon Dock, Belfast BT1 3BG
☎ +44 (0)28 9026 1200 📠 +44 (0)28 9026 1234 📞 +44 (0)28 9024 2063 ✉ info@ccea.org.uk 🌐 www.ccea.org.uk

