



Northern Ireland  
Curriculum

Reading Scheme to Support the  
Learning for Life and Work Thematic Units (SLD)  
**Jobs in the Local Community**  
Level 1

**Writers' Group:**

Graham Hawthorne, Marian Humphrey, Shirley Gwynne and Avril Napier, all from Roddensvale School, Larne

A CCEA Publication ©2010

[www.nicurriculum.org.uk](http://www.nicurriculum.org.uk)

**Photographs**

All photographs courtesy of Roddensvale School, Larne

Reading Scheme to Support the  
Learning for Life and Work  
Thematic Units (SLD)

# **Jobs in the Local Community**

Level 1

---

## Notes to the Teacher:

The activities in this booklet are designed to support the topic *Jobs in the Local Community*. You can photocopy, cut out and laminate the picture cards at the back of the booklet and use them together with the picture board in a variety of ways. For example:

- Have the learners practise picture recognition by sticking the cards on top of the identical squares on the board.
- Have the learners place all the cards in front of them. Say a word, and they point to or hold up the corresponding picture card.
- Give a clue, such as ‘you can buy flowers here’, and invite the learners to hold up the corresponding card (garden centre).
- Call out specific categories for the learners to sort and categorise their cards, for example ‘places where you can buy food’ or ‘places you have visited’.
- Hold a class discussion on the topic, talking about the picture on each card.
- Use two sets of laminated cards to play matching pairs. Place all the cards face down. Working in pairs, the learners take turns to turn over two cards – if they match, they keep the cards. The winner is the one with more cards at the end.

---

Imagine if everyone had to cut their own hair, prepare their own food in cafés and fix their own cars. Would that be a good idea?

When people work in different places in a community and do different jobs, they can help each other with different things.

For example,  
hairdressers cut  
hair ...



... and waiters serve  
food.



**Circle the places  
where you would  
like to work.**



**nursery**



**café**



**office**



**charity shop**



**hairdresser's**



corner shop



garage



garden centre

## What type of job might you do in each place?

- washing dishes
- watering plants
- washing cars
- hanging clothes
- playing with children
- brushing the floor
- making photocopies
- opening boxes of food

# Picture Board



café



charity shop



office



garage





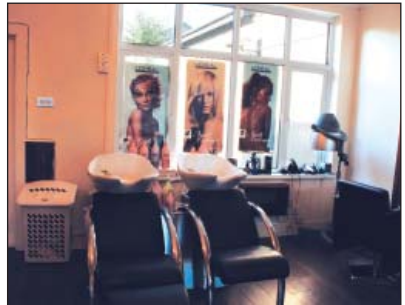
corner shop



nursery



garden centre



hairdresser's

# Picture Cards A



café



charity shop



office



garage



# Picture Cards B



corner shop



nursery



garden centre



hairdresser's



A CCEA Publication © 2010



INVESTOR IN PEOPLE



CUSTOMER SERVICE EXCELLENCE



**COUNCIL FOR THE CURRICULUM EXAMINATIONS AND ASSESSMENT**

☎ +44 (0)28 9026 1200

☎ +44 (0)28 9026 1234

☎ +44 (0)28 9024 2063

29 Clarendon Road, Clarendon Dock, Belfast BT1 3BG

✉ info@ccea.org.uk

🌐 www.ccea.org.uk



*Rewarding Learning*