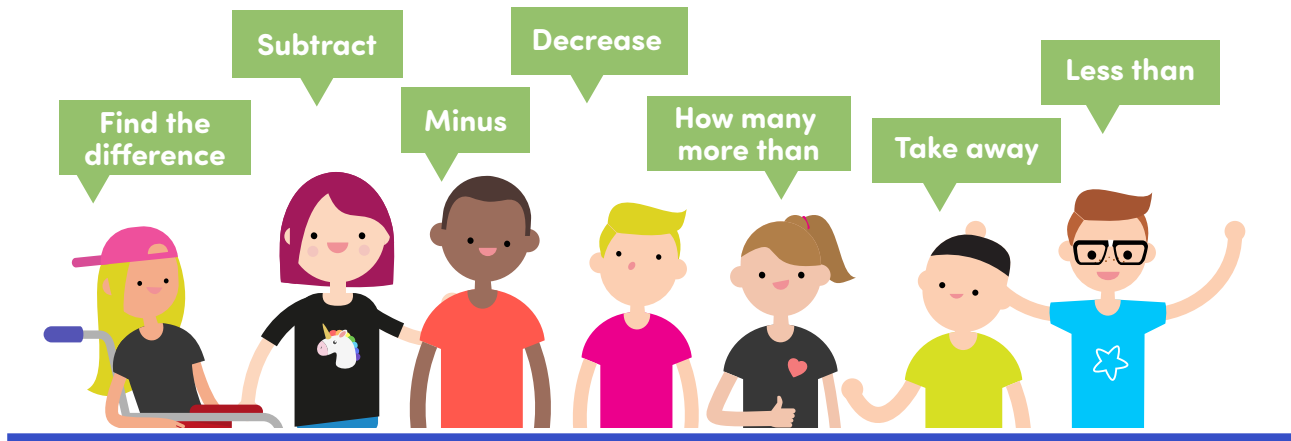


# Subtraction with Exchange

## Nearly There – Card 5

Subtraction questions can use lots of different words but the calculations are all similar.



Recording your calculation clearly will help to stop you getting mixed up:

		Columns		
		H	T	U
Rows	Symbols	Hundreds	Tens	Units
		3	6	1
	-	0	8	3

The symbol, **Hundreds**, **Tens** and **Units** each have separate columns.

In a subtraction calculation the top number is always the larger of the two.

If there is an empty space, we put in a zero

Tens and Units can help you to understand how subtraction with exchange works.

Hundreds	Tens	Units
Remember, one <b>Hundred</b> ...	...is the same as ten <b>Tens</b> . One Ten...	...is the same as ten <b>Units</b> .

Now, try these calculations before checking the answer card:

- 708 minus 25.
- 528 subtract 81.
- 344 take away 98.
- 418 subtract 69.
- 235 take away 77.
- 670 minus 51

# Subtraction with Exchange

## Nearly There – Card 5: Answers



Check your answers.

### Answer 1

	<b>H</b>	<b>T</b>	<b>U</b>
Symbols	Hundreds	Tens	Units
	<del>6</del> 7	<del>1</del> 0	8
-	0	2	5
	6	8	3

Hundreds	Tens	Units

### Answer 2

	<b>H</b>	<b>T</b>	<b>U</b>
Symbols	Hundreds	Tens	Units
	<del>4</del> 5	<del>1</del> 2	8
-	0	8	1
	4	4	7

Hundreds	Tens	Units

### Answer 3

	<b>H</b>	<b>T</b>	<b>U</b>
Symbols	Hundreds	Tens	Units
	<del>2</del> 3	<del>1</del> 3	<del>4</del> 14
-	0	9	8
	2	4	6

Hundreds	Tens	Units

# Subtraction with Exchange

## Nearly There – Card 5: Answers



### Answer 4

	<b>H</b>	<b>T</b>	<b>U</b>
Symbols	Hundreds	Tens	Units
	<del>3</del> 4	<del>10</del> 1	18
-	0	6	9
	3	4	9

Hundreds	Tens	Units
3 blocks of 100	4 blocks of 10	18 blocks of 1
0 blocks of 100	6 blocks of 10	9 blocks of 1
3 blocks of 100	4 blocks of 10	9 blocks of 1

### Answer 5

	<b>H</b>	<b>T</b>	<b>U</b>
Symbols	Hundreds	Tens	Units
	<del>1</del> 2	<del>12</del> 3	15
-	0	7	7
	1	5	8

Hundreds	Tens	Units
1 block of 100	2 blocks of 10	15 blocks of 1
0 blocks of 100	7 blocks of 10	7 blocks of 1
1 block of 100	5 blocks of 10	8 blocks of 1

### Answer 6

	<b>H</b>	<b>T</b>	<b>U</b>
Symbols	Hundreds	Tens	Units
	<del>6</del>	<del>6</del> 7	10
-	0	5	1
	6	1	9

Hundreds	Tens	Units
6 blocks of 100	7 blocks of 10	10 blocks of 1
0 blocks of 100	5 blocks of 10	1 block of 1
6 blocks of 100	1 block of 10	9 blocks of 1

Well done! the more you practise the easier it is for your brain to find the information you need! If you would like to have another go at this try Nearly There - Card 6.

