

Subtraction with Exchange

Nearly There – Card 4



Let's look at more subtraction calculations that use the words:

Find the difference between 38 and 67.

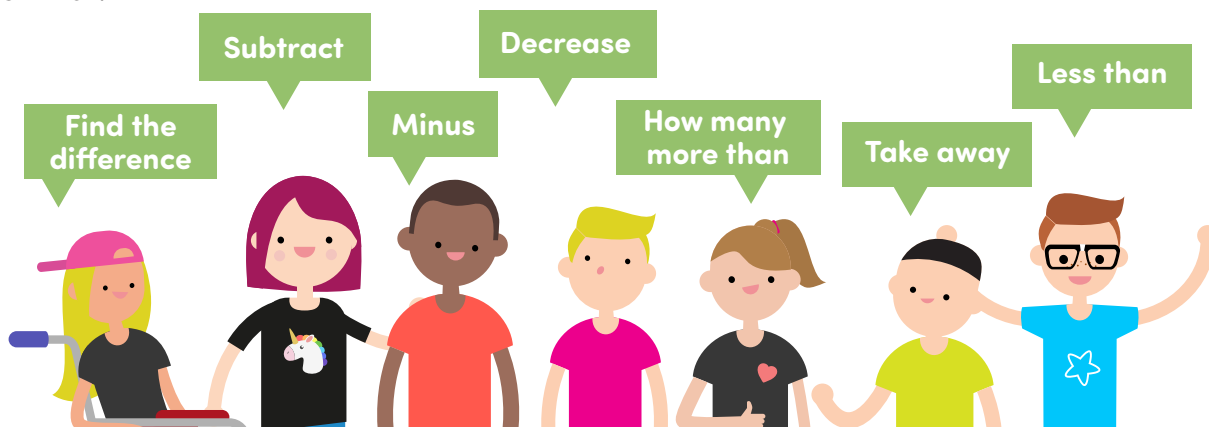
Decrease 94 by 49.

How many more than 17 is 45?

How many less than 86 is 57?

Remember to use what you already know about subtraction calculations.

1. Subtraction questions can use lots of different words but the calculations are all similar.



2. In a subtraction calculation the top number is always the larger of the two.

3. Record your calculation clearly to help to stop you getting mixed up.

4. The symbol, Tens and Units each have separate columns.

Now, try these calculations before checking the answer card:

1. Find the difference between 38 and 67.
2. How many more than 17 is 45?
3. Decrease 94 by 49.
4. How many less than 86 is 57?

Remember, in a subtraction calculation, the top number is always the larger number!

Subtraction with Exchange

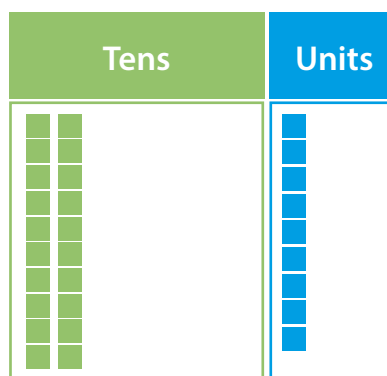
Nearly There – Card 4: Answers



Check your answers.

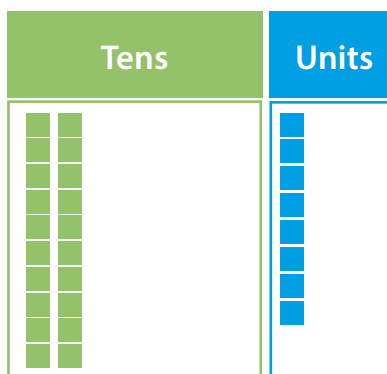
Answer 1

	T Tens	U Units
Symbols		
	5 6	17
-	3	8
	2	9



Answer 2

	T Tens	U Units
Symbols		
	3 4	15
-	1	7
	2	8



Subtraction with Exchange

Nearly There – Card 4: Answers



Check your answers.

Answer 3

	T Tens	U Units
	8 9	1 4
-	4	9
	4	5

Tens	Units

Answer 4

	T Tens	U Units
	7 8	1 6
-	5	7
	2	9

Tens	Units

Wow, I knew you could do it.

