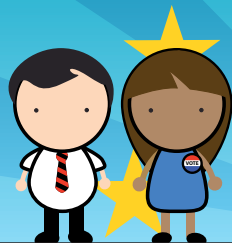


# Resource 1.6

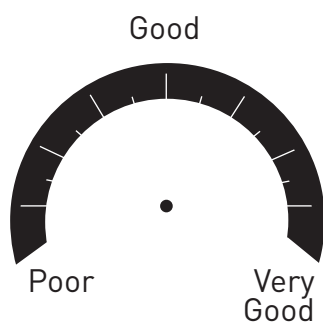
## Web Evaluation Template



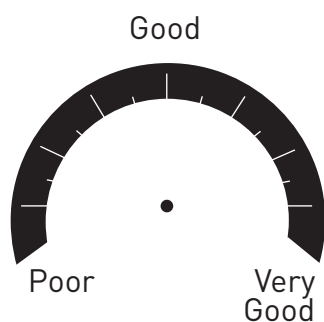
# EU4U?

Compare one website the teacher provided you with one website your group sourced on its own. Then draw a dial on each webometer below to indicate how well the website you sourced met your needs.

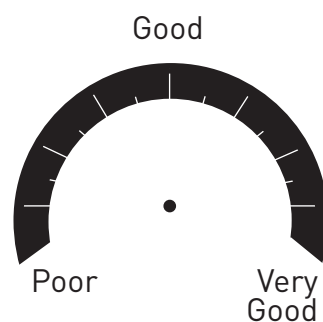
### Your Teacher's Website



Was the website easy to navigate?

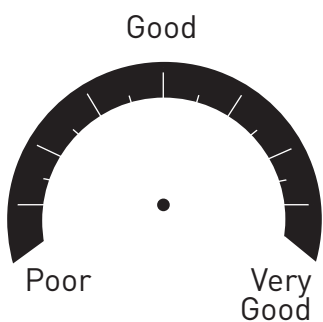


Was the information up-to-date?

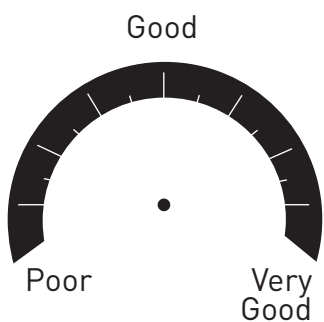


Was the information it provided relevant to your query?

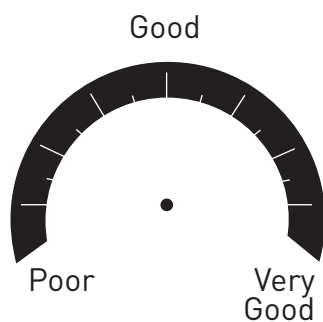
### Your Group's Website



Was the website easy to navigate?



Was the information up-to-date?



Was the information it provided relevant to your query?

Next, write a short report that evaluates the following:

- the look and feel of each website – its layout and fonts and graphics used;
- the language within each site – which was easier to read; and
- accuracy – did either of the sites have spelling, grammar or punctuation errors, etc.