

## Problem

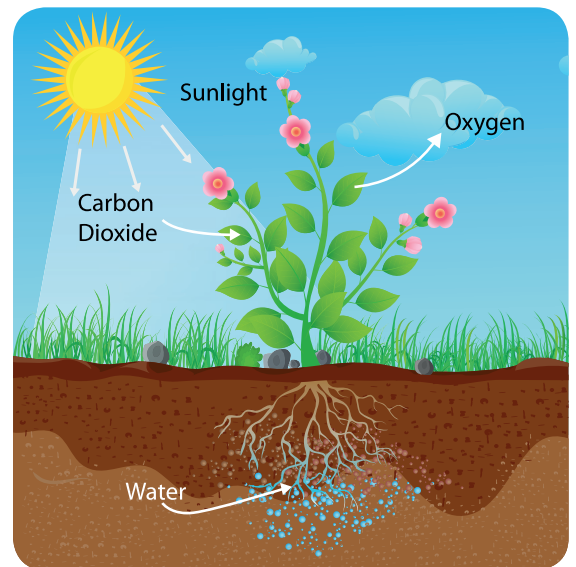
Leaves tend to have a large surface area to help them to absorb sunlight.

They need this to allow them to make food to help them grow.

However, it can also mean that the leaves can get too warm.

This causes them to lose water, which can damage the plant.

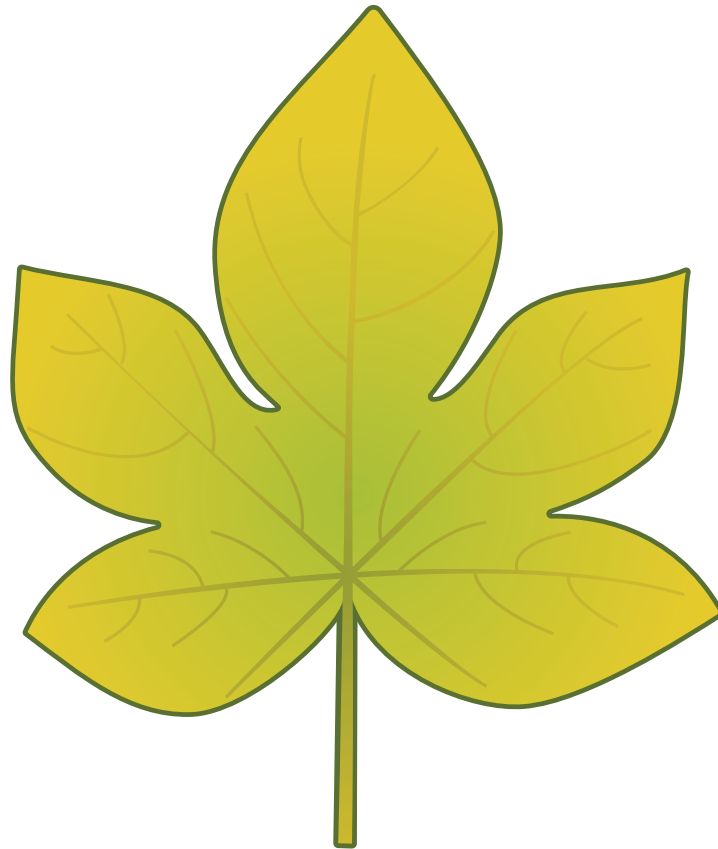
Plants perform a balancing act of trying to keep the area of their leaves big enough to get enough sunlight, without absorbing too much heat, or losing too much water.



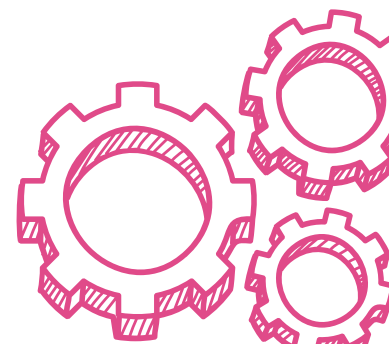
**Using your available resources, decide which of the two leaves on the next page will be able to absorb more sunlight.**



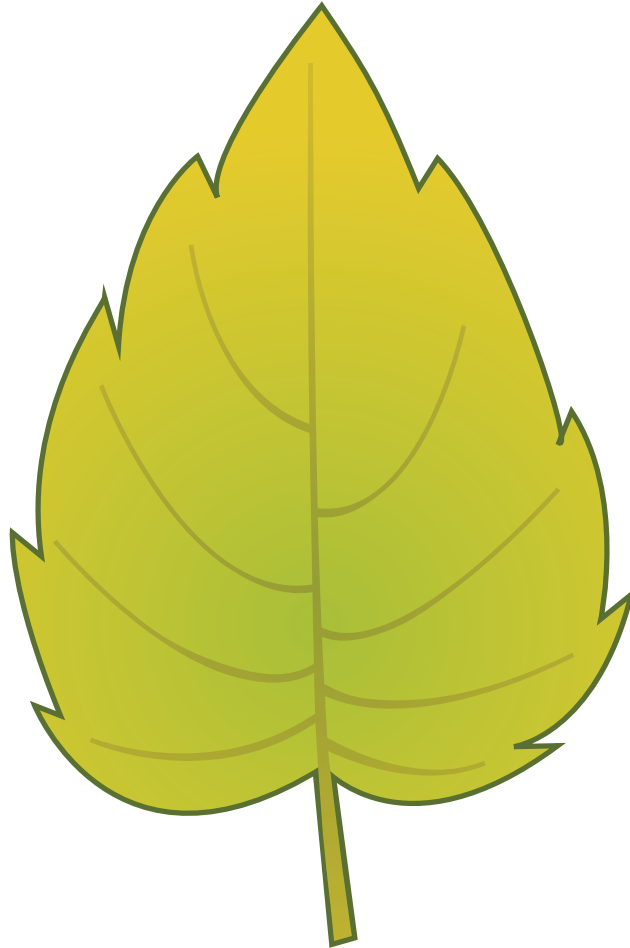
# Catching Sunlight (Continued)



Leaf A



# Catching Sunlight (Continued)



Leaf B

Images © thinkstock.com

